

Installation Instructions

For Electric Heater Kits in FLEXX Air Handlers

FLEXX24HP240V1AH

FLEXX36HP240V1AH

FLEXX48HP240V1AH

FLEXX60HP240V1AH



ATTENTION INSTALLING PERSONNEL

Prior to installation, thoroughly familiarize yourself with this Installation Manual. Observe all safety warnings. During installation or repair, caution is to be observed. It is your responsibility to install the product safely and to educate the customer on its safe use.

CAUTIONS

- **ENSURE THAT ALL POWER IS DISCONNECTED PRIOR TO ATTEMPTING INSTALLATION OF THIS HEATER KIT. THERE MAY BE MORE THAN ONE DISCONNECT SERVICING THE UNIT.**
- **A MEANS OF STRAIN RELIEF AND CONDUCTOR PROTECTION MUST BE PROVIDED AT THE SUPPLY WIRE ENTRANCE INTO CABINET.**
- **USE COPPER CONDUCTORS ONLY**
- **INSTALLATION MUST FOLLOW NATIONAL ELECTRIC CODE AND OTHER APPLICABLE CODES**

IF THIS APPLIANCE IS INSTALLED IN AN ENCLOSED AREA SUCH AS A GARAGE OR UTILITY ROOM WITH ANY CARBON MONOXIDE PRODUCING APPLIANCE, ENSURE THE AREA IS PROPERLY VENTILATED

1. Remove the front panel and upper access panel from the air handler.



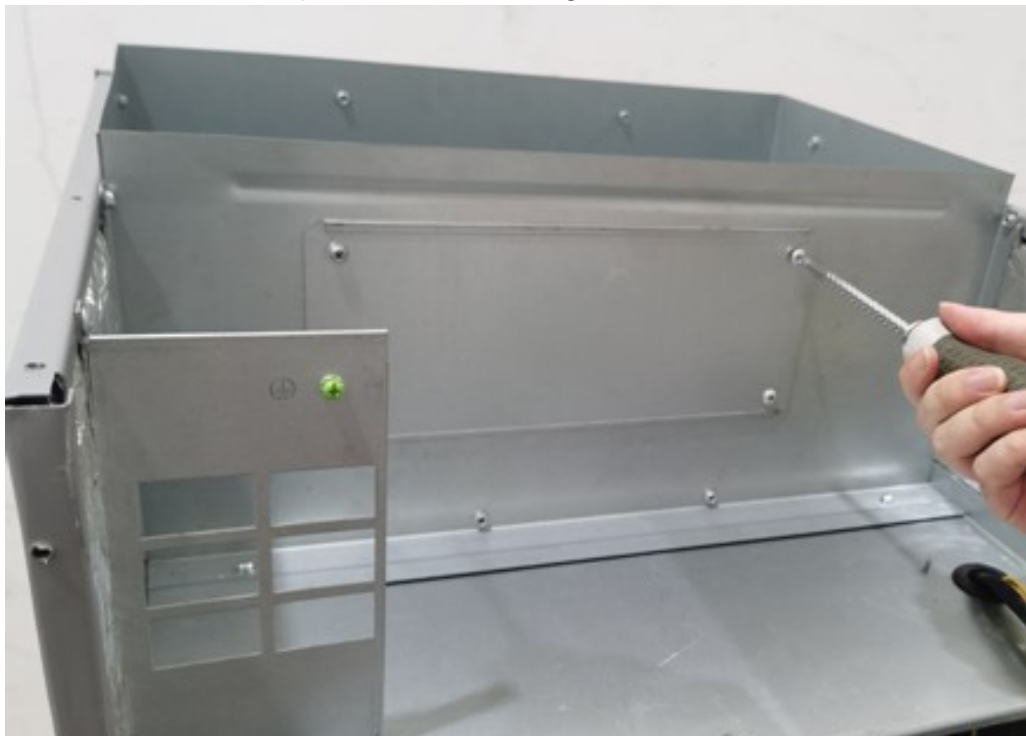
2. Disassemble the electrical box



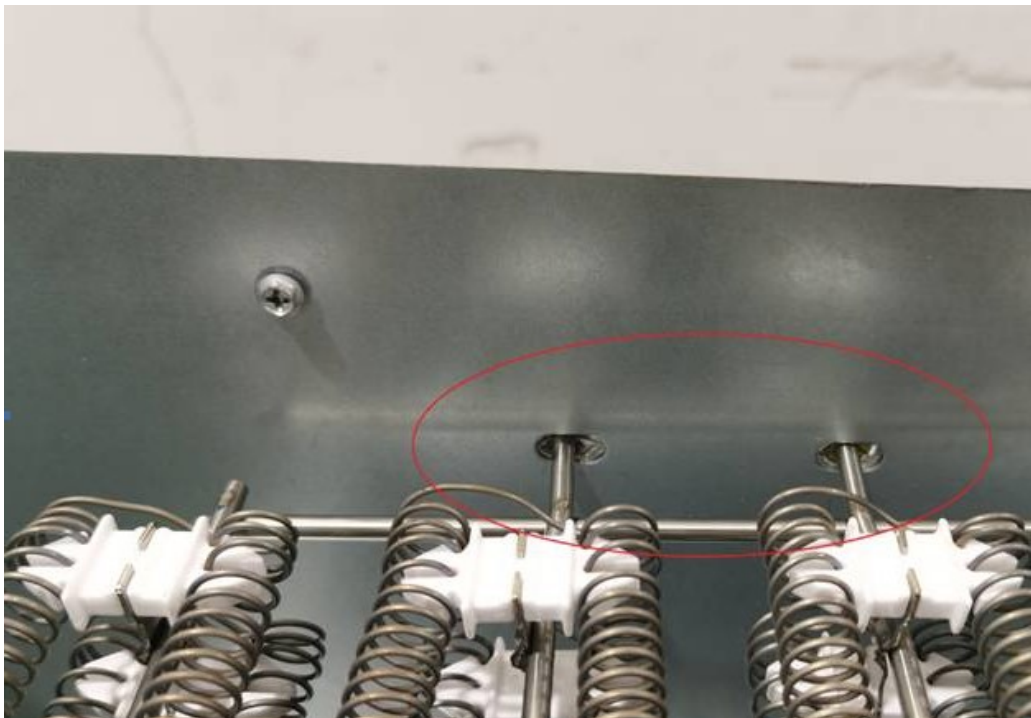
3. Remove the electrical box



4. Disassemble the metal plate at the mounting hole of the electric heater



5. Install the electric heater to the metal plate position which disassembles in step 4. (Notes: There are two holes circled below which are used to fasten the electric heater bracket during installation)



6. Install breaker (Notes: When installation, you need to lift up the buckle first, hold the breaker bracket and then put down the buckle to fix the breaker)



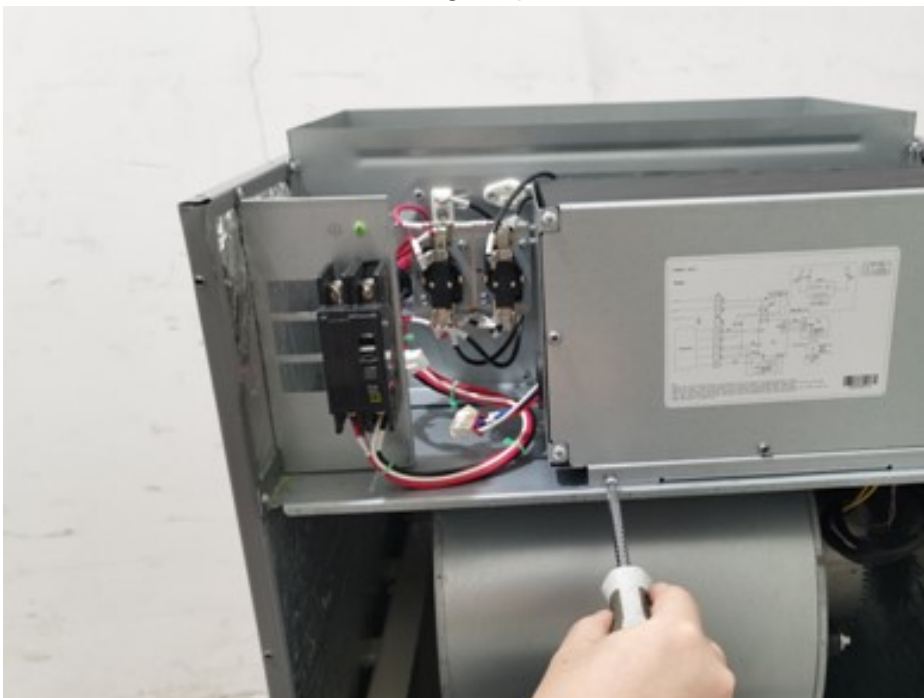
7. Connect the electric heater terminal



8. After installation, the schematic diagram is as follows:



9. Install the electrical box back to the original position



10. Install the front panel and upper panel back to the air handler. Electric heater installation is completed.

Electric Heater Kits

Model	Cooling capacity(ton)	Optional electric heater	
FLEXX24,36HP230V1AH	2.0 / 3.0	FLEXXHTR5KW	5
FLEXX24,36HP230V1AH	2.0 / 3.0	FLEXXHTR8KW	8
FLEXX36,48,60HP230V1AH	3.0 / 4.0 / 5.0	FLEXXHTR10KW	10
FLEXX48,60HP230V1AH	4.0 / 5.0	FLEXXHTR15KW	15
FLEXX48,60HP230V1AH	4.0 / 5.0	FLEXXHTR20KW	20



U.S. CONTACT INFORMATION
TRADEWINDS, LLC

www.greecomfort.com/resources
E-mail: info@twclimate.com
Contractor Support 888-850-7928 | Mon-Fri 8AM-5PM EDT



GREE ELECTRIC APPLIANCES, INC. OF ZHUHAI

Add: West Jinji Rd, Qianshan, Zhuhai, Guangdong, China, 519070
Tel: (+86-756) 8522218
Fax: (+86-756) 8669426
E-mail: gree@gree.com.cn www.gree.com